



40  
PAINTINGS  
UNDER £50,000

[www.richardgreen.com](http://www.richardgreen.com)

**RICHARD GREEN**

FINE PAINTINGS • ESTABLISHED 1955



KEN HOWARD  
*Salute*, (detail, cat. no.40)

# 40 PAINTINGS UNDER *£50,000*

EXHIBITION OPENS AT  
THE GALLERY AND ONLINE  
MONDAY 12TH FEBRUARY

Contact:  
Penny Marks / Marie-Claire Green / Guy Sawers

147 New Bond Street,  
London W1S 2TS

+44 (0)20 7493 3939  
[paintings@richardgreen.com](mailto:paintings@richardgreen.com)  
[www.richardgreen.com](http://www.richardgreen.com)







HILDA FEARON

*Study for Lelant Ferry* (detail, cat. no.19)

# FOREWORD

RICHARD GREEN GALLERY

We are delighted to present *Forty Paintings Under £50,000*, a wonderful selection of fine paintings at fair value, 'specially reduced for the duration of the exhibition.

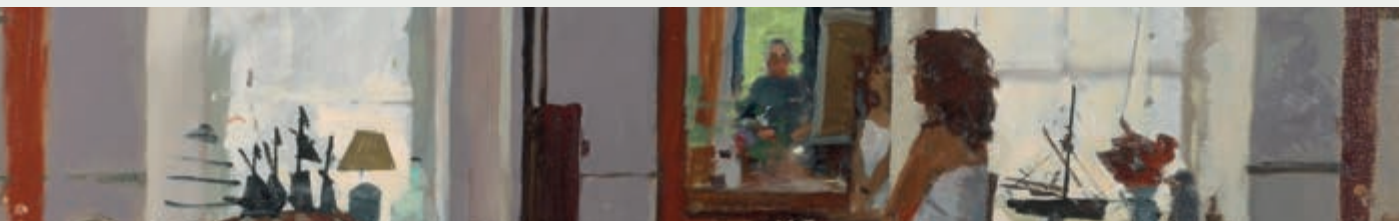
These works reflect the breadth of my interests and the gallery's stock over my career of almost seven decades. They span three centuries, from the colourful painting of a peacock and other birds by Marmaduke Cradock, *circa* 1700, to the charming portrait of a *Girl with lilac* by Sophie Anderson, *circa* 1865, previously in the collection of Lewis Carroll, to a delightful flower painting by Cecil Kennedy, painted *circa* 1962, previously owned by Lady Virginia Williams, to sections devoted to the twentieth century masters, Edward Seago and Ken Howard.

We hope there is something for everyone, from first-time buyers to seasoned connoisseurs looking for a particular work to add to their collection.

Creating an art collection is a journey that gives continued pleasure to the owner. As always, we say to our collectors: buy with confidence, buy what you really like, and you will have enjoyment from your paintings for many years to come.

Richard Green

Chairman





# CONTENTS

SECTION 1  
SPORTING / ANIMAL PAINTING

SECTION 2  
PORTRAITS

SECTION 3  
LANDSCAPE / MARINE PAINTING

SECTION 4  
FLOWERS

SECTION 5  
EDWARD SEAGO

SECTION 6  
KEN HOWARD

ARTIST INDEX

SECTION 1

SPORTING / ANIMAL PAINTING



MARMADUKE CRADOCK

*A peacock, a peahen, a cockerel, hen and other  
birds in a parkland setting (detail, cat. no.1)*





1

**MARMADUKE CRADOCK**

Somerton c.1660 - 1717 Whitechapel, London

*A peacock, a peahen, a cockerel, hen and other birds in a parkland setting*

Oil on canvas: 25  $\frac{5}{8}$  x 56  $\frac{5}{8}$  in / 65.1 x 143.8 cm  
Frame size: 32  $\frac{1}{2}$  x 63  $\frac{1}{2}$  in / 82.6 x 161.3 cm  
Painted circa 1700

**PROVENANCE:**

Major JP Compton, Blayworth Manor, Bushmead, Bedfordshire, by 1969  
Private collection, UK

£45,000



2

## JOHN FREDERICK HERRING SNR

Surrey 1795 - 1865 Meopham Park, Kent

### *A cow and her calf in stable interior with ducks*

Signed and dated lower left: *J.F. Herring Senr. / 1847.*

Oil on panel: 13 x 17¼ in / 33 x 43.8 cm

Frame size: 17 x 21 in / 43.2 x 53.3 cm

#### PROVENANCE:

Arthur Ackermann, London

SE Kennedy;

Mrs EAM Riley-Smith, Bridge House, Loxwood, West Sussex;

Sotheby's sale at Bridge House, 14th July 1982, lot 9;

Richard Green, London, 1982;

private collection, UK

£25,000



3

### HENRIETTE RONNER-KNIP

Amsterdam 1821 - 1909 Brussels

#### *A gentle provocation*

Signed and dated lower right: *Henriette Ronner. / 99*; inscribed with the title and the artist's address on a label attached to the frame: *Madame Henriette Ronner / 57 Chaussée de Vleurgat / Brussels / A gentle provocation*

Oil on panel: 12  $\frac{3}{4}$  x 18  $\frac{1}{8}$  in / 32.4 x 46 cm

Frame size: 23 x 28  $\frac{1}{2}$  in / 58.4 x 72.4 cm

#### PROVENANCE:

Private collection, UK

£45,000



4

**HEYWOOD HARDY**

Chichester 1842 - 1933 Epsom

*Refreshments at a wayside inn*

Signed lower right: *Heywood Hardy*

Oil on canvas: 25 ½ x 36 ¼ in / 64.8 x 92.1 cm

Frame size: 32 x 42 in / 81.3 x 106.7 cm

**PROVENANCE:**

Private collection, UK

£35,000



5

ARCHIBALD THORBURN

Lasswade, Edinburgh 1860 - 1935 Hascombe, Surrey

*Red grouse (Lagopus scoticus) on the moor*

Signed and dated lower left: *A. Thorburn / 1918*

Watercolour: 7 x 11 in / 17.8 x 27.9 cm

Frame size: 16 ½ x 19 ½ in / 41.9 x 49.5 cm

PROVENANCE:

Richard Haworth, Blackburn;

private collection, UK

£45,000





6

**ARCHIBALD THORBURN**

Lasswade, Edinburgh 1860 - 1935 Hascombe, Surrey

*Cock and hen pheasant (Phasianus colchicus) in an open landscape*

Signed and dated lower centre: A. Thorburn. 1901

Watercolour: 11 x 15 in / 27.9 x 38.1 cm

Frame size: 20 ½ x 24 in / 52.1 x 61 cm

**PROVENANCE:**  
Private collection, UK

£45,000

SECTION 2

# PORTRAITS



ANNA AIRY  
*Spring song* (detail, cat. no.11)





Basil Sparrow, JP, of Gosfield Place, Essex and his wife Julia (née Scratton).

On the seat behind are Isabel (23), Basil (21) and Serena (22).

Inside the coach are Beatrice (15), Ethel (12) and Richard ('Dick') (3), in his sailor suit.

On the back seat are Herbert (17), Florence (20) and Reginald (14), with the grooms Ike Dury and James McBean facing them.



7

ALFRED FRANK DE PRADES  
(ANACHARSIS-FRANÇOIS PRESTREAU)

Lunel 1825 - 1885 London

*Basil Sparrow, JP, of Gosfield Place, Essex driving  
his wife and family to church*

Signed and dated lower left: *A. de Prades. / 1874*

Oil on canvas: 32 x 54 in / 81.3 x 137.2 cm

Frame size: 43 x 65 in / 109.2 x 165.1 cm

PROVENANCE:

By descent in the Sparrow family to Col. Richard Sparrow, CMG, DSO,  
FRGS, FZS (1871-1953);

bequeathed in 1953 to his second cousin Peter Rushbrooke, RN;  
by descent

£40,000



8

EMMA SANDYS

1841 - Heigham, Norwich - 1877

*Fidelity*

Oil on board: 10 x 8 in / 25.4 x 20.3 cm

Frame size: 14 ¾ x 12 ¾ in / 37.5 x 32.4 cm

Painted circa 1870

PROVENANCE:

Messrs. Spelman, The Ivy House Sale, Norwich, 18th March 1914,

lot 623, as *Head of a girl*;

private collection, Norwich, then by descent

£48,000



9

## SOPHIE ANDERSON

Paris 1823-1903 Falmouth

### *Girl with lilac*

Signed with initials lower left: s.a.

Oil on canvas: 8 ¾ x 6 ½ in / 22.2 x 16.5 cm

Frame size: 16 ¼ x 14 ¼ in / 41.3 x 36.2 cm

Painted circa 1865

#### PROVENANCE:

C L Dodgson, better known as Lewis Carroll, 1865, Christ Church College Oxford, until his death in 1896;  
to his sister at The Chestnuts, Guildford, then by family descent  
Christie's London, 20th March 1998, lot 165;  
Richard Green, London; private collection, Canada

£35,000



10

SIR ALFRED MUNNINGS KCVO PRA RWS

Mendham 1878 - 1959 Dedham

*A study of Miss Victoria Brady for Mrs Helen Cutting  
and Misses Brady (RA 1935)*

Oil on panel: 14  $\frac{1}{4}$  x 10  $\frac{1}{8}$  in / 36.2 x 25.7 cm

Frame size: 16  $\frac{3}{4}$  x 13  $\frac{1}{2}$  in / 42.5 x 34.3 cm

Painted circa 1935

PROVENANCE:

Bond Street Galleries (James Green), London

Wildenstein & Co., New York

Private collection, Rancho Santa Fe, CA;

then by descent

£48,000\*





11

## ANNA AIRY RI ROI RP RE PS GI

London 1882 - 1964 Playford, near Ipswich

*Spring song*

Signed lower right: A. Airy  
 Oil on canvas: 34 x 44 in / 86.4 x 111.8 cm  
 Frame size: 48 x 57 in / 121.9 x 144.8 cm  
 Painted circa 1936

## PROVENANCE:

Private collection, UK, direct from the artist, then by descent

## EXHIBITED:

London, Royal Academy of Arts, *Summer Exhibition*, 4th May-8th August 1936, no.547  
 Glasgow, Royal Glasgow Institute of Fine Arts, 1936, no.124  
 Glasgow, Royal Glasgow Institute of Fine Arts, 1952, no.138  
 Ipswich, Christchurch Mansion, *Retrospective loan exhibition oils, watercolours, pastels, etchings, drawings by Anna Airy RI, ROI, RE*, 20th April-16th June 1985, no.43

£38,000\*

SECTION 3

LANDSCAPE / MARINE PAINTINGS

SIR ALFRED MUNNINGS  
*A Norfolk river* (detail, cat. no. 21)







12a

ABRAHAM HULK SNR

Amsterdam 1813 - 1897 London

*On the Scheldt, low tide*

One of a pair

Signed lower left: *A Hulk*;

Oil on panel: 8 x 12 in / 20.3 x 30.5 cm

Frame size: 14 x 18 in / 35.6 x 45.7 cm

Painted circa 1880

PROVENANCE:

MacConnal-Mason, London;

private collection, UK



12b

**ABRAHAM HULK SNR**  
Amsterdam 1813 - 1897 London

*On the Scheldt, sunset*

One of a pair  
Signed lower right: *A Hulk*;  
Oil on panel: 8 x 12 in / 20.3 x 30.5 cm  
Frame size: 14 x 18 in / 35.6 x 45.7 cm  
Painted *circa* 1880

**PROVENANCE:**  
MacConnal-Mason, London;  
private collection, UK

A pair £38,000



13

## WILLEM KOEKKOEK

Amsterdam 1839 - 1895 Nieuwer-Amstel (Amstelveen)

### *A Dutch street in summer*

Signed lower left: *W Koekkoek*

Oil on canvas: 17 ¼ x 23 ½ in / 43.8 x 59.7 cm

Frame size: 25 ½ x 31 in / 64.8 x 78.7 cm

Painted circa 1880s

#### PROVENANCE:

The Estate of Mrs ID Brookland;

Sotheby's London, 19th April 1978, lot 15;

Richard Green, London;

private collector, USA, acquired from the above

£45,000



14

LOUIS BOSWORTH HURT

1856 - Derbyshire - 1929

*Gleams after rain*

Signed lower right: *Louis B. Hurt*; inscribed with the title on the stretcher

Oil on canvas: 22 ½ x 27 ¾ in / 57.2 x 70.5 cm

Frame size: 29 x 34 in / 73.7 x 86.4 cm

Painted *circa* 1900

PROVENANCE:

Private collection, South Africa

£45,000



15a

ALBERT-CHARLES LEBOURG

Montfort-sur-Risle 1849 - 1928 Rouen

*Le Pont Marie, Paris*

One of a pair, signed lower left: *A Lebourg*

Oil on panel: 6 1/8 x 9 1/4 in / 15.6 x 23.5 cm

Frame size: 11 x 14 1/2 in / 27.9 x 36.8 cm

Painted circa 1910

PROVENANCE:

Arthur Tooth and Sons Ltd., London, inv. no.5310

Private collection, UK





15b

**ALBERT-CHARLES LEBOURG**

Montfort-sur-Risle 1849 - 1928 Rouen

*Le Pont Neuf, Paris*

One of a pair  
Oil on panel: 6 1/8 x 9 1/4 in / 15.6 x 23.5 cm  
Frame size: 11 x 14 1/2 in / 27.9 x 36.8 cm  
Painted circa 1910

**PROVENANCE:**

Arthur Tooth and Sons Ltd., London, inv. no.5310  
Private collection, UK

A pair £35,000



16

## ARTHUR E. GRIMSHAW

1868 - Leeds - 1913

*Glasgow - Night*Signed and dated lower left: *Arthur E Grimshaw 1895*;

signed, dated and inscribed on the stretcher:

*Glasgow - Night Arthur E. Grimshaw 1895*

Oil on canvas: 11 x 18 in / 27.9 x 45.7 cm

Frame size: 16 ½ x 23 ¾ in / 41.9 x 60.3 cm

## PROVENANCE:

James Cooper Harding, a gift from the artist, then by descent

£42,000



17

ARTHUR E. GRIMSHAW

1868 - Leeds - 1913

*Prince's Landing Stage, Liverpool*

Signed and dated lower right: *Arthur E Grimshaw 1895*;  
inscribed on the stretcher: *Prince's Landing Stage, Liverpool*  
Oil on canvas: 10 ½ x 18 in / 26.7 x 45.7 cm  
Frame size: 16 ¼ x 23 ¾ in / 41.3 x 60.3 cm

PROVENANCE:

James Cooper Harding, a gift from the artist, then by descent

£35,000



18

## JOSEPH OPPENHEIMER

Wurzburg 1876 - 1966 Montreal

*Sonntag im Hyde Park: Sunday in Hyde Park*Signed and dated lower right: *J. Oppenheimer / 1906*; signed andinscribed on the reverse: *J. Oppenheimer / Sonntag im Hyde Park*

Oil on panel: 9 7/8 x 13 1/4 in / 25.1 x 33.7 cm

Frame size: 15 1/2 x 19 in / 39.4 x 48.3 cm

## PROVENANCE:

Private collection, Germany

£48,000\*



19

**HILDA FEARON**

Banstead, Surrey 1878 - 1917 London

*Study for Lelant Ferry*

Signed and indistinctly dated on the stretcher: *H. Fearon 01*

Oil on canvas: 16 x 21 in / 40.6 x 53.3 cm

Frame size: 22 x 27 in / 55.9 x 68.6 cm

**PROVENANCE:**

Frederick Boyer, before 1935, then by descent

£48,000



20

## BENJAMIN WILLIAMS LEADER RA

Worcester 1831 - 1923 Shere, Surrey

### *Water lilies*

Signed and dated lower left: *B.W. LEADER 1915*; signed and inscribed on the reverse of the frame: *No.4 Water Lilies / B.W. Leader*

Oil on panel: 16 x 24 in / 40.6 x 61 cm

Frame size: 26 ½ x 34 ½ in / 67.3 x 87.6 cm

### PROVENANCE:

Henry J Mullen, Harrogate

Wargrave Manor, Berks

Knight, Frank & Rutley, 15th June 1966, lot 500;

private collection

### EXHIBITED

London, Royal Academy of Arts, *Summer Exhibition*, 3rd May-14th

August 1915, no.454

£35,000



21

SIR ALFRED MUNNINGS KCVO PRA RWS

Mendham 1878 - 1959 Dedham

*A Norfolk river*

Signed lower right: *A.J. Munnings*

Watercolour: 9  $\frac{5}{8}$  x 13  $\frac{3}{4}$  in / 24.4 x 34.9 cm

Frame size: 19 x 22  $\frac{1}{4}$  in / 48.3 x 56.5 cm

Painted *circa* 1901

PROVENANCE:

Private collection, UK

£30,000\*

SECTION 4

# FLOWERS

CECIL KENNEDY  
*A summer group* (detail, cat. no.25)









22

EDWARD LADELL

Colchester 1821 - 1886 Exeter

*Still life with fruit, roses and a wine glass*

Signed with monogram lower left: *EL*

Oil on canvas: 14 x 12 in / 35.6 x 30.5 cm

Frame size: 20 x 18 in / 50.8 x 45.7 cm

Painted circa 1880

PROVENANCE:

Private collection, UK, then by descent

£17,500



23

**VICTORIA DUBOURG**

Paris 1840 - 1926 Buré, Orne

*Still life of a bowl of flowers*

Signed lower left: *V. Dubourg*  
Oil on canvas: 15 ½ x 18 ¾ in / 39.4 x 47.6 cm  
Frame size: 23 x 26 in / 58.4 x 66 cm  
Painted circa 1890

**PROVENANCE:**  
Private collection, UK

£35,000



24

**CECIL KENNEDY**

Leyton 1905 - 1997 St Albans

*Still life of white flowers in a glass goblet*

Signed lower right: *Cecil Kennedy*

Oil on canvas: 26 x 20 in / 66 x 50.8 cm

Frame size: 32 x 26 in / 81.3 x 66 cm

Painted circa 1962

**PROVENANCE:**

Lady Virginia Williams, then by descent

£20,000\*



25

**CECIL KENNEDY**

Leyton 1905 - 1997 St Albans

*A summer group*

Signed lower right: *Cecil Kennedy*  
Oil on canvas: 30 x 25 in / 76.2 x 63.5 cm  
Frame size: 36 7/8 x 32 in / 93 x 81.3 cm  
Painted *circa* 1952

**PROVENANCE:**

Frost & Reed, London [527685];  
private collection, acquired from the above, then by descent

**EXHIBITED:**

London, Royal Academy of Arts, *Summer Exhibition*, 3rd May - 24th August 1952,  
no.335

£25,000\*



26

MARY FEDDEN OBE RA PPRWA

Bristol 1915 - 2012 London

*Petunias, pansy & crocus*

Signed and dated lower left: *Fedden '96*; signed and inscribed on a label

attached to the reverse: *Mary Fedden / Petunias, Pansy & /Crocus*

Oil on canvas laid down on board: 10 x 8 in / 25.4 x 20.3 cm

Frame size: 14 x 12 in / 35.6 x 30.5 cm

PROVENANCE:

Bohun Gallery, Henley-on-Thames;

private collection, acquired from the above by 1998

Private collection, UK

£20,000\*



27

## MARY FEDDEN OBE RA PPRWA

Bristol 1915 - 2012 London

### *Three crocuses*

Signed and dated lower left: *Fedden 1988*

Oil on canvas: 24 x 20 in / 61 x 50.8 cm

Frame size: 25 x 29 inches / 63.5 x 73.7 cm

#### PROVENANCE:

Royal West of England Academy, Bristol, 1988;

Joan Hawkins, Bristol, acquired from the above, then by descent

#### EXHIBITED:

Bristol, Royal West of England Academy, *An Exhibition by Artist Members of the Academy: William Cooper, Bernard Dunstan RA, Mary Fedden, Judith Greenbury, Leonard Manasseh RA*, 25th April-21st May 1988, no.57

Bristol, Royal West of England Academy, *Summer Exhibitions 2011, Mary Fedden: Celebration*, 6th June-31st August 2011

£35,000\*







28

## MARY FEDDEN OBE RA PPRWA

Bristol 1915 - 2012 London

### *The white umbrella*

Signed and dated lower right: *Fedden '01*; signed and inscribed on a label attached to the reverse: *Mary Fedden / The White Umbrella*  
 Oil on canvas: 40 x 24 in / 101.6 x 61 cm  
 Frame size: 48 x 38 in / 121.9 x 96.5 cm

PROVENANCE:  
 Clark Art Ltd., Cheshire;  
 private collection, UK, 2005

£38,000\*

SECTION 5

# EDWARD SEAGO

EDWARD SEAGO  
*A Norfolk backwater* (detail, cat. no.33)







29

EDWARD SEAGO RWS RBA

Norwich 1910 - 1974 London

*The Black Poplar*

Signed lower left: *Edward Seago*; titled on the reverse;  
Watercolour and pencil: 13 ½ x 20 ¼ in / 34.3 x 51.4 cm  
Frame size: 22 ½ x 28 ½ in / 57 x 72.5 cm  
Painted circa 1965

PROVENANCE:

P & D Colnaghi & Co. Ltd., London  
Christie's Melbourne, 22nd August 2005, lot 344;  
private collection, Australia

£25,000\*



30

**EDWARD SEAGO RWS RBA**

Norwich 1910 - 1974 London

*August, Waxham Beach, Norfolk*

Signed lower left: *Edward Seago*; titled on the reverse

Oil on board: 12 x 20 in / 30.5 x 50.8 cm

Frame size: 19 x 27 in / 48.3 x 68.6 cm

Painted in the 1960s

**PROVENANCE:**

Private collection, UK

£45,000\*



31

EDWARD SEAGO RWS RBA

Norwich 1910 - 1974 London

*Trees on a backwater – Norfolk*

Signed lower left: *Edward Seago*; titled on the reverse

Oil on board: 10 ½ x 14 in / 26.7 x 35.6 cm

Frame size: 17 ¼ x 20 ¾ in / 43.8 x 52.7 cm

Painted circa 1967

PROVENANCE:

Marlborough Fine Art Ltd., London, inv. no. XLOL 3711

Private collection, UK

EXHIBITED:

London, Marlborough Fine Art Ltd., *Edward Seago: English Landscapes, Recent Oil Paintings*, 1968, p.6, no.49

£28,000\*



32

EDWARD SEAGO RWS RBA

Norwich 1910 - 1974 London

*September morning*

Signed lower left: *Edward Seago*; titled on the reverse

Oil on board: 20 x 30  $\frac{1}{8}$  in / 50.8 x 76.5 cm

Frame size: 26  $\frac{1}{2}$  x 36  $\frac{3}{4}$  in / 67.3 x 93.3 cm

Painted in the 1960s

PROVENANCE:

P & D Colnaghi & Co. Ltd., London;

private collector, UK, acquired 1st January 1968,  
then by descent

£48,000\*



33

EDWARD SEAGO RWS RBA

Norwich 1910 - 1974 London

*A Norfolk backwater*

Signed lower left: *Edward Seago*; titled on the reverse

Oil on board: 16 x 24 in / 40.6 x 61 cm

Frame size: 22 <sup>3</sup>/<sub>4</sub> x 30 <sup>3</sup>/<sub>4</sub> in/ 57.8 x 78.1 cm

Painted *circa* 1970

PROVENANCE:

Marlborough Fine Art Ltd., London, inv. no.XLOL 8235

Private collection, UK

£28,000\*





34

## EDWARD SEAGO RWS RBA

Norwich 1910 - 1974 London

*The furrow*Signed lower left: *Edward Seago*; titled on the reverse

Oil on board: 20 x 30 in / 50.8 x 76.2 cm

Frame size: 27 x 37 in / 68.6 x 94 cm

Painted *circa* 1968

## PROVENANCE:

P &amp; D Colnaghi &amp; Co. Ltd, London

Private collection, UK

Richard Green, London, 2000

private collection, UK

## EXHIBITED:

London, Richard Green, *Edward Seago 1910-1974*, 2001, no.8, illus. in colour

£48,000\*





35

**EDWARD SEAGO RWS RBA**

Norwich 1910 - 1974 London

*Thames barges on the Orwell*

Signed lower left: *Edward Seago*; titled on the reverse

Oil on board: 14 x 20 in / 35.6 x 50.8 cm

Frame size: 20 <sup>3</sup>/<sub>4</sub> x 26 <sup>3</sup>/<sub>4</sub> in / 52.7 x 67.9 cm

Painted circa 1970

**PROVENANCE:**

Corporate collection

£48,000\*

SECTION 6

# KEN HOWARD



KEN HOWARD  
*Artist and model at St Clement's studio*  
(detail, cat. no.37)





en Howard



36

**KEN HOWARD OBE RA**

London 1932 - 2022 Cornwall

*Venetian reflections*

Signed lower left: *Ken Howard*

Oil on canvas: 40 x 48 in / 101.6 x 121.9 cm

Frame size: 47 ½ x 55 ½ in / 120.6 x 141 cm

Painted *circa* 1999

**PROVENANCE:**

Private collection, UK, purchased from the Royal Academy Summer Exhibition in 1999

**EXHIBITED:**

London, Royal Academy of Arts, *Summer Exhibition*, 7th June-15th August 1999, no.970

£42,000\*



37

KEN HOWARD OBE RA

London 1932 - 2022 Cornwall

*Artist and model at St Clement's studio*

Signed lower right: *Ken Howard*

Oil on canvas: 40 x 48 in / 101.6 x 121.9 cm

Frame size: 46 ¾ x 54 ¾ in / 118.7 x 139.1 cm

Painted circa 2006

PROVENANCE:

Richard Green, London, acquired directly from the artist;

Private collection, UK, 2006

£42,000\*





38

**KEN HOWARD OBE RA**  
London 1932 - 2022 Cornwall

*On Marazion Beach*

Signed lower right: *Ken Howard*  
Oil on canvas: 26 x 30 in / 66 x 76.2 cm  
Frame size: 30 ¾ x 34 ¾ in / 78.1 x 88.3 cm  
Painted *circa* 1996

**PROVENANCE:**  
Private collection, then by descent

£25,000\*



39

KEN HOWARD OBE RA

London 1932 - 2022 Cornwall

*Silver self portrait*

Signed lower right: *Ken Howard*;  
inscribed with a list of colours on the reverse  
Oil on canvas: 40 x 48 in / 101.6 x 121.9 cm  
Frame size: 47 x 55 in / 119.4 x 139.7 cm  
Painted circa 2006

PROVENANCE:

Richard Green, London, 2006, acquired directly from the artist;  
private collection, UK, acquired from the above in 2006

£42,000\*



40

## KEN HOWARD OBE RA

London 1932 - 2022 Cornwall

### *Salute*

Signed lower right: *Ken Howard*

Oil on canvas: 40 x 48 in / 101.6 x 121.9 cm

Frame size: 48 ¾ x 56 ½ in / 123.8 x 143.5 cm

Painted *circa* 2007

### PROVENANCE:

Richard Green, acquired directly from the artist;  
private collection, UK, 2007

### EXHIBITED:

London, Richard Green, *Ken Howard, Theme and Variation*,  
September 2007, no.62, illus. in colour p.71, as *Salute, spring  
morning light*

£42,000\*

# LIST OF MUSEUMS & NATIONAL COLLECTIONS

Richard Green has assisted in the formation and development of numerous private and public collections including the following

## **UNITED KINGDOM**

Aberdeen: City Art Gallery  
Altrincham: Dunham Massey (NT)  
Barnard Castle: Bowes Museum  
Bedford: Cecil Higgins Museum  
Canterbury: Royal Museum and Art Gallery  
Cheltenham: Art Gallery and Museum  
Chester: The Grosvenor Museum  
Coventry: City Museum  
Dedham: Sir Alfred Munnings Art Museum  
Hampshire: County Museums Service  
Hull: Ferens Art Gallery  
Ipswich: Borough Council Museums and Galleries  
Leeds: Leeds City Art Gallery  
Lincoln: Usher Gallery  
Liskeard: Thorburn Museum  
London: Chiswick House (English Heritage)  
Department of the Environment  
The Iveagh Bequest, Kenwood  
The Museum of London  
National Maritime Museum  
National Portrait Gallery  
National Postal Museum  
Tate Britain  
The Wimbledon Lawn Tennis Museum  
Lydiard Tregoze: Lydiard House  
Malmesbury: Athelstan Museum  
Norwich: Castle Museum  
Plymouth: City Museum and Art Gallery  
Richmond: London Borough of Richmond upon Thames  
and Orleans House Gallery  
St Helier: States of Jersey (Office)  
Southsea: Royal Marine Museum  
Stirling: Stirling Smith Art Gallery and Museum  
York: York City Art Gallery

## **CANADA**

Fredericton: Beaverbrook Art Gallery  
Ottawa: The National Gallery of Canada

## **UNITED STATES OF AMERICA**

Baltimore, MD: Baltimore Museum of Art  
Boston, MA: Museum of Fine Arts  
Cincinnati, OH: Art Museum  
Dayton, OH: The Dayton Art Institute  
Gainesville, FL: Harn Museum of Art  
Houston, TX: Sarah Campbell Blaffer Foundation  
Los Angeles, CA: J Paul Getty Museum  
New Haven, CT: Yale Center for British Art  
New York, NY: Dahesh Museum  
Ocala, FL: The Appleton Museum of Art  
Omaha, NE: Joslyn Art Museum  
Pasadena, CA: Norton Simon Museum  
Rochester, NY: Genessee County Museum  
San Marino, CA: The Huntington Library  
St Louis, MO: Missouri Historical Society  
Sharon, MA: Kendall Whaling Museum  
Toledo, OH: Toledo Museum of Art  
Ventura County, CA: Maritime Museum  
Washington, DC: The National Gallery  
The White House  
Williamstown, MA: Sterling and Francine  
Clark Art Institute  
Winona, MN: Minnesota Marine Art Museum  
Worcester, MA: Worcester Art Museum

## **BELGIUM**

Antwerp: Maisons Rockox  
Courtrai: City Art Gallery

## **DENMARK**

Troense: Maritime Museum

## **IRELAND**

Dublin: National Gallery of Ireland

## **FRANCE**

Compiègne: Musee National du Chateau  
Paris: Fondation Custodia

**GERMANY**

Berlin: Staatliche Kunsthalle  
Darmstadt: Hessisches Landesmuseum  
Hannover: Niedersächsisches  
Landesmuseum  
Karlsruhe: Staatliche Kunsthalle  
Speyer am Rhein: Historisches Museum der Pfalz

**JAPAN**

Kanagawa: The Pola Museum of Art, The Pola Art  
Foundation

**HOLLAND**

Amsterdam: Joods Historisch Museum  
Rijksmuseum  
Amersfoort: Museum Flehite  
Utrecht: Centraal Museum

**SOUTH AFRICA**

Durban: Art Museum

**SPAIN**

Madrid: Real Academia de Bellas Artes de  
San Fernando  
Museo Thyssen-Bornemisza  
Museo Nacional del Prado

**SWITZERLAND**

Zurich: Schweizerisches Landesmuseum

**THAILAND**

Bangkok: Museum of Contemporary Art

**TERMS OF SALE**

Asking prices have been reduced for the duration of the exhibition until 12th April 2024..

Paintings marked with an asterisk (\*) are subject to 'Artist's Resale Right': a royalty due on the sale of a work of art, approximately 3-4% of the price, payable directly to the artist or the appointed deceased artist's estate, within 70 years of their passing.

Paintings are sold subject to our standard terms and conditions of sale, available at

[www.richardgreen.com](http://www.richardgreen.com) and on request.

The Richard Green Gallery will obtain shipping and delivery quotations, for client agreement, which would be added onto the sales invoice for final settlement. Insurance would be covered by Richard Green in transit by our nominated agents until safely delivered.

## ARTIST INDEX

Airy, Anna	11	Hurt, Louis Bosworth	14
Anderson, Sophie	9	Kennedy, Cecil	24, 25
Cradock, Marmaduke	1	Koekkoek, Willem	13
Dubourg, Victoria	23	Ladell, Edward	22
Fearon, Hilda	19	Leader, Benjamin Williams	20
Fedden, Mary	26, 27, 28	Lebourg, Albert-Charles	15
Hardy, Heywood	4	Munnings, Sir Alfred	10,21
Grimshaw, Arthur	16, 17	Oppenheimer, Joseph	18
Hardy, Heywood	4	Prades, Alfred Frank de	7
Herring Snr, John Frederick	2	Ronner-Knip, Henriette	3
Howard, Ken	36, 37, 38, 39, 40	Sandys, Emma	8
Hulk Snr, Abraham	12	Seago, Edward	29, 30, 31, 32, 33, 34, 35
		Thorburn, Archibald	5, 6

Catalogue by Susan Morris and Rachel Boyd Hall. Photography by Sophie Drury. Graphic design by Adamandia Pashalidi. Published by Richard Green. © Richard Green (and any applicable image right owners/artists or their estates) 2024. Database right maker: Richard Green. All rights reserved. Paintings are sold subject to our standard terms and conditions of sale, copies of which may be obtained on request and are also available at [www.richardgreen.com](http://www.richardgreen.com) Richard Green is the registered trade mark of Richard Green Master Paintings Limited registered in the EU, the USA and other countries. Printed in England by Hampton Printing (Bristol) Ltd. Event no: 6746.

Full cataloguing details and artist biographies are available in our galleries and on our website

[www.richardgreen.com](http://www.richardgreen.com)



SOPHIE ANDERSON  
*Girl with lilac*, (detail, cat. no.9)

**RICHARD GREEN**

FINE PAINTINGS • ESTABLISHED 1955